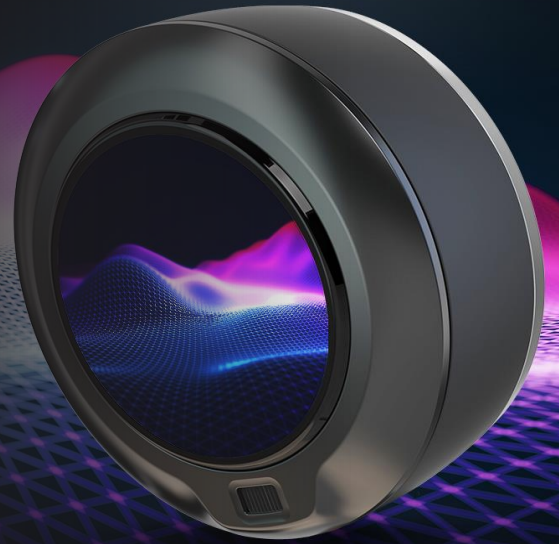




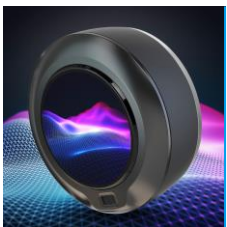
Decision Support for Diagnostics, Screening & Monitoring

Sanolla Ltd. is dramatically advancing the art of auscultation by coupling embedded artificial intelligence disease classifiers with clinically rich body sounds lying in the infrasound (< 30Hz) acoustic band. This disruptive technology is improving patient care through two new products:

- The VoqX™ digital stethoscope that empowers clinicians with the best auscultation experience possible and highly accurate full-spectrum AI classifiers for diagnostic and screening decision support, and
- The PyXy™ home remote patient monitoring device that monitors the most burdensome and prevalent chronic diseases (CHF, COPD, asthma) for early signs of exacerbations and degradations.

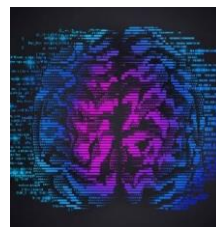


Our Technology - The Sounds of Life



Making Infrasound Audible

Body sounds below 30Hz have clinically valuable information

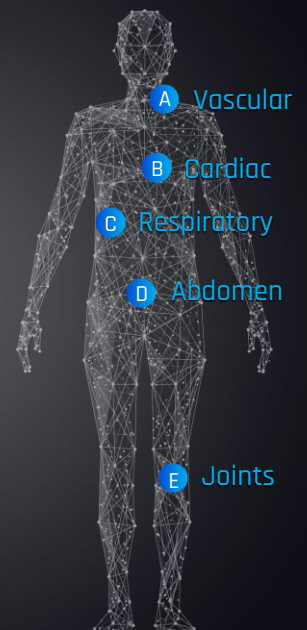
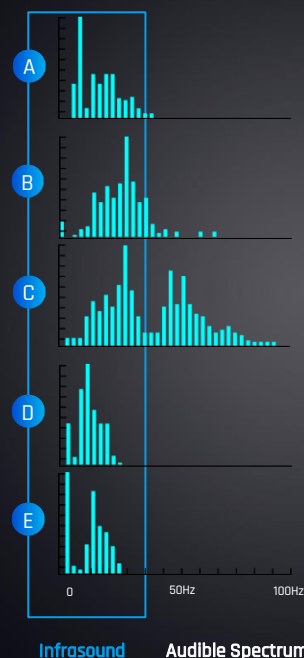


AI-Powered Analysis

- AI-Based Disease Classifiers
- Real-Time Signal Processing
- Self-Contained AI Processing

Full-Spectrum Auscultation Infrasound & Audible AI Disease Classifiers

Body sounds contain rich clinical information in the infrasound (<30 Hz) band. Sanolla's patented technology picks up these sounds and applies artificial intelligence disease classifiers to this information. This boosts the accuracy of the classifiers to over 90%, significantly better than classifiers restricted to the audible spectrum.



Sounds
of Life



The World's Best Stethoscope

The VoqX, the world's best stethoscope, provides an unmatched auscultation experience complemented by infrasound aware AI disease classifiers. Acoustics are optimized through dynamic ambient noise cancellation and frequency shifting that brings the body's sounds to the ear's most sensitive range, giving the clinician the best tools to make a diagnosis. Disease classifiers include pneumonia, aortic stenosis, atrial fibrillation, murmurs, wheezes, crackles, and exacerbations for CHF and COPD.

- Dynamic Noise Cancellation
- Acoustic Optimization
- Visible Sound Signatures
- Embedded AI Support
- Data Storage & Sharing
- Infrasound Auscultation

- 👂 Lung & Heart Sounds
- ❤️ Heart Rate
- 🌡️ Oxygen Saturation
- 🫁 Respiratory Cycle



AI-Powered Disease Classifiers
Diagnostic & Screening Support



Wide-band
Auscultation



Early Exacerbation Detection | CHF, COPD, Asthma

The PyXy remote patient monitor provides early exacerbation detection for healthcare's most burdensome chronic diseases: CHF, COPD and asthma. The AI disease classifiers, applied to the full spectrum of both audible and inaudible body sounds, provides early and accurate detection of exacerbations so that the patient can be returned to their normal baseline with a minimal intervention. The embedded heart rate monitor, ECG, respiratory cycle, pulse oximeter and thermometer provide the additional vital signs information for full AI analysis, assisting the physician in deciding the best course of action.

- | | |
|------------------------|---------------------|
| 👂 Lung Sounds | 👂 Heart Sounds |
| ❤️ Heart Rate | 📊 ECG |
| 🌡️ Oxygen Saturation | 🫁 Respiratory Cycle |
| 🩺 Comp. Blood Pressure | 🌡️ Body Temperature |



Embedded AI classifiers

- Early Detection for Simpler Intervention
- Less Emergency Room Visits
- Fewer Hospital Admissions & Readmissions



About Sanolla

Sanolla Ltd., is the world's leader in auscultation technology basing its products on patented infrasound detection technology. Sanolla has collected over 40,000 fully annotated sound files covering a wide variety of body sounds and diseases. Using these full-spectrum sound files, unique to Sanolla, the most accurate AI classifiers have been developed and are integrated as embedded technology into Sanolla's leading auscultation products.



info@sanolla.com
www.sanolla.com

2P-V002